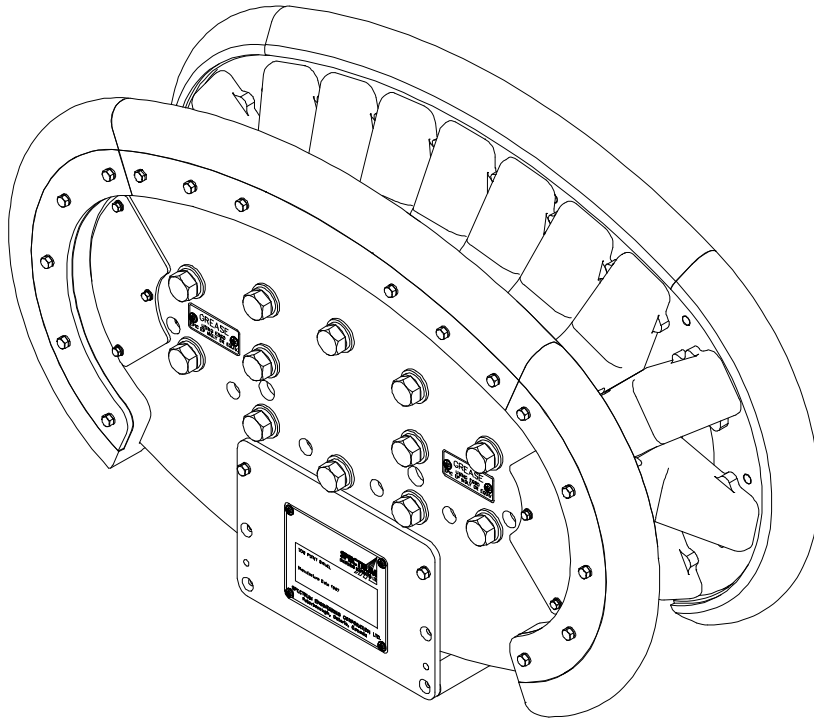


ODIM Spectrum Ltd.

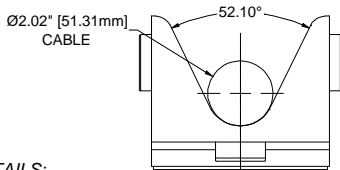
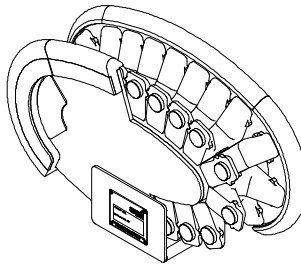


FAIRLEAD MECHANISM MODEL 610/45

THE ODIM SPECTRUM 610/45 FAIRLEAD MECHANISM IS ENGINEERED TO PROVIDE SUPERIOR PERFORMANCE AND RELIABILITY WHILE TYPICALLY OCCUPYING LESS THAN 25% OF THE SPACE NEEDED FOR EQUIVALENT CONVENTIONAL GUIDANCE SHEAVES.

CONSTRUCTION DETAILS:

THE RUGGED 610/45 FAIRLEAD MECHANISM IS FABRICATED ENTIRELY OF CORROSION-RESISTANT MATERIALS. THE STAINLESS STEEL SIDE PLATES HAVE BOLTED CONSTRUCTION PROVIDING EASY ACCESS FOR MAINTENANCE. CONNECTED ALUMINUM BRONZE FLIGHTS, ENCASED IN TOUGH, MARINE-GRADE URETHANE FORM OUR UNIQUE FLIGHT CHAIN. SLIDING BEARING INTERFACES BENEATH THE FLIGHTS ALLOW THE FLIGHT CHAIN TO QUIETLY GLIDE ON THE HARDENED ALUMINUM BRONZE TRACK. ONCE THE LOAD AND WRAP ANGLE BECOME SUFFICIENT TO OVERCOME THE MINIMAL INTERNAL FRICTION OF THE FAIRLEAD MECHANISM, THE FLIGHT CHAIN WILL ROTATE, ENABLING THE FLIGHTS TO CRADLE AND CONTINUOUSLY SUPPORT THE CABLE. THIS VIRTUALLY ELIMINATES THE FRICTION AND POINT LOADING THAT LEADS TO PREMATURE CABLE FAILURE.

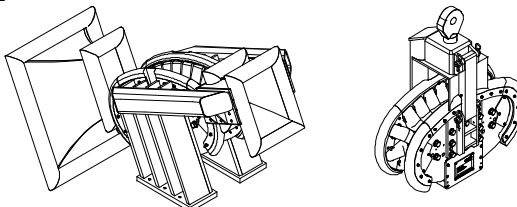


FLIGHT DETAILS:

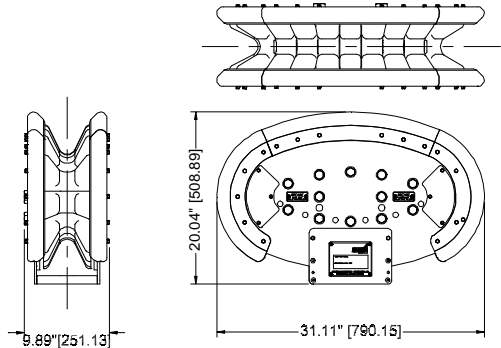
THE FLIGHTS FOR THE 610/45 FAIRLEAD MECHANISM ARE DESIGNED TO ACCOMMODATE A VARIETY OF CABLE DIAMETERS UP TO 5" (127mm). THE DEEP "V" CROSS-SECTION IS OPERATIONALLY PROVEN TO PROVIDE PROPER SUPPORT AND GUIDANCE TO CABLES WITH VARYING DIAMETERS. OUR ENGINEERS WILL BE PLEASED TO PROVIDE THE FLIGHT DESIGN THAT ASSURES CONFORMANCE TO YOUR CABLE REQUIREMENTS.

ACCESSORIES:

THE 610/45 FAIRLEAD MECHANISM IS AVAILABLE WITH A WIDE RANGE OF CUSTOM DESIGNED AND STOCK MOUNTING KITS AS WELL AS ENTRANCE/EXIT CABLE GUIDANCE TRUMPETS. WE CAN SUPPLY HYDRAULICALLY DRIVEN CONFIGURATIONS, DNV CERTIFICATION, AND INSTRUMENTATION PACKAGES FOR SPEED SENSING SYSTEMS AND CABLE MONITORING SYSTEMS. OTHER FAIRLEAD MECHANISM MODELS AND SIZES ARE AVAILABLE.



DESIGN SPECIFICATIONS



BEND RADIUS: 610mm (24 in)
 WRAP ANGLE: 45°
 WEIGHT: 315 lb (143 kg)
 MAXIMUM ALLOWABLE CABLE SIZE: 5" (127mm)
 MAXIMUM ALLOWABLE LINE TENSION*: 28,800 lb (13.1 tonne)
 AT 45° WRAP ANGLE
 VERTICAL SAFE WORKING LOAD*: 11,025 lb (5 tonne) AND
 22,050 lb (10 tonne) AVAILABLE

* FOR UNITS MANUFACTURED PRIOR TO 1998, PLEASE CONTACT ENGINEERING AT ODIM SPECTRUM LTD

ODIM SPECTRUM LTD IS A LEADING DESIGNER AND SUPPLIER OF SPECIALIZED MARINE CABLE HANDLING AND TOWING EQUIPMENT. FOR MORE INFORMATION ON THIS AND OUR OTHER PRODUCTS, PLEASE CONTACT OUR MARKETING DEPARTMENT

ODIM SPECTRUM LTD

597 The Queensway
 Peterborough, Ontario, Canada K9J 7J6
 Tel: 705.743.9249 Fax: 705.743.8003
 Internet: www.odim-spectrum.com
 Email: info@odim-spectrum.com

"Providing In-Depth Solutions in the Marine Environment"

60850002 RI 99/05/19